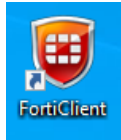
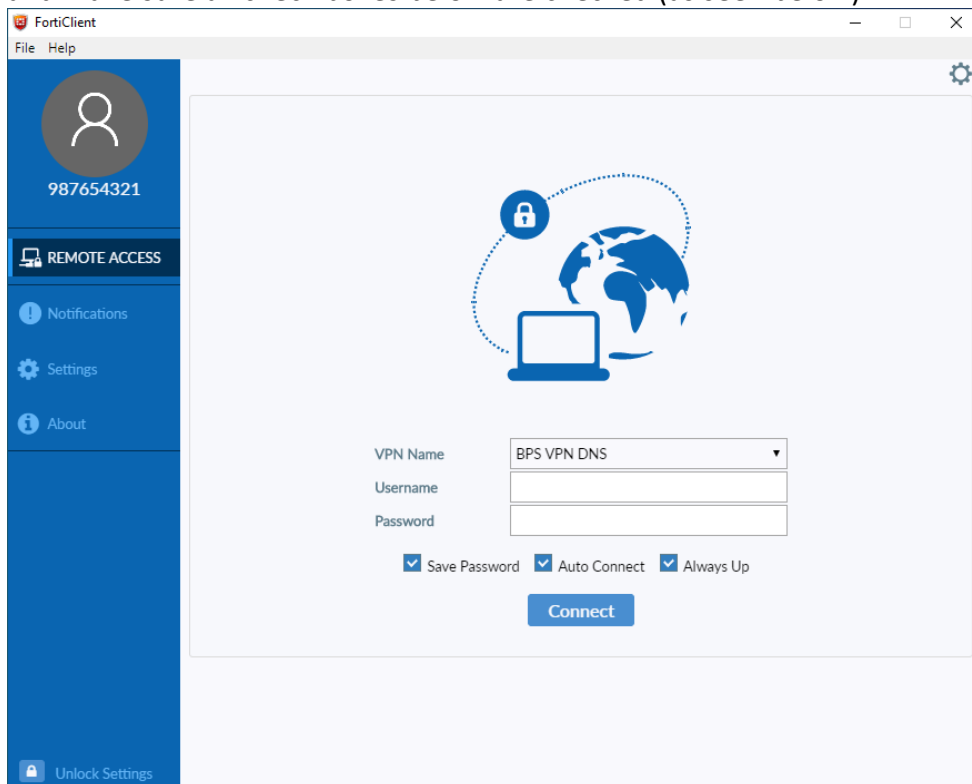


FortiClient for Students

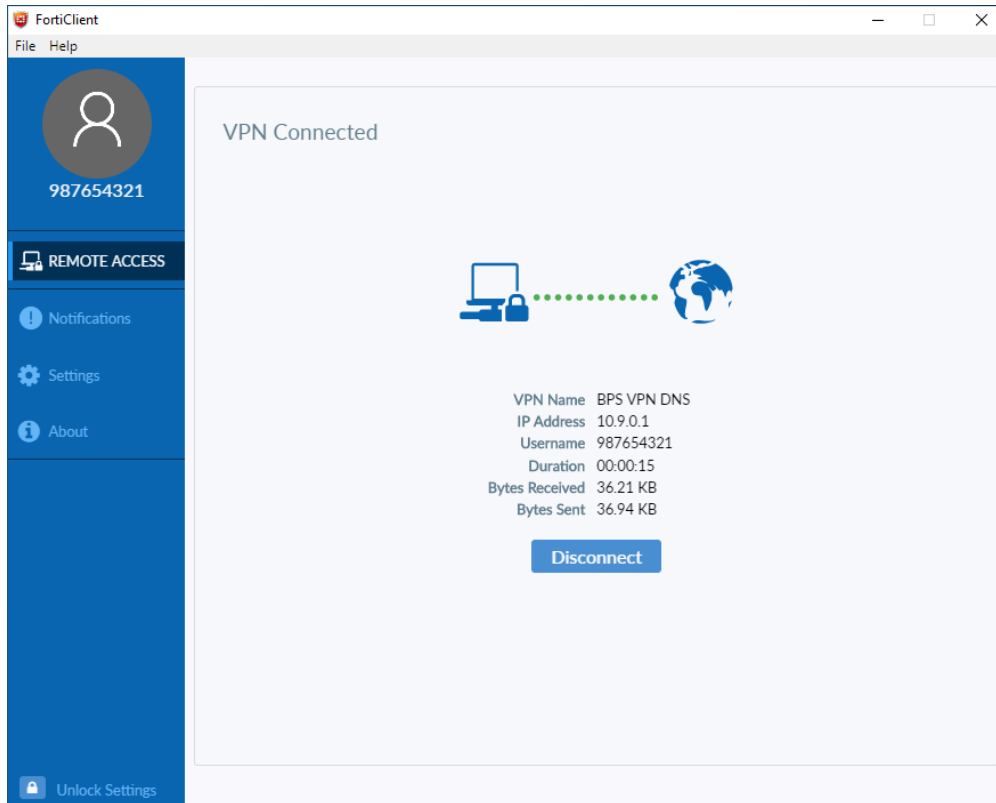
To open FortiClient the student can double click the FortiClient icon found on the Desktop.



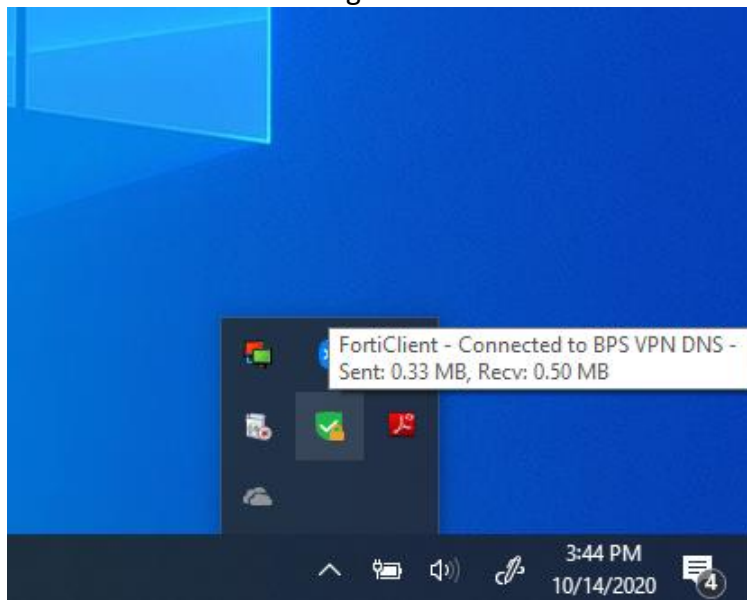
Once the FortiClient console opens the student will place their BPS Username and password and make sure all check boxes below are checked (as seen below)



Students after checking all boxes and connecting will see this screen, showing they are connected. You can close the window after seeing a successful connection.

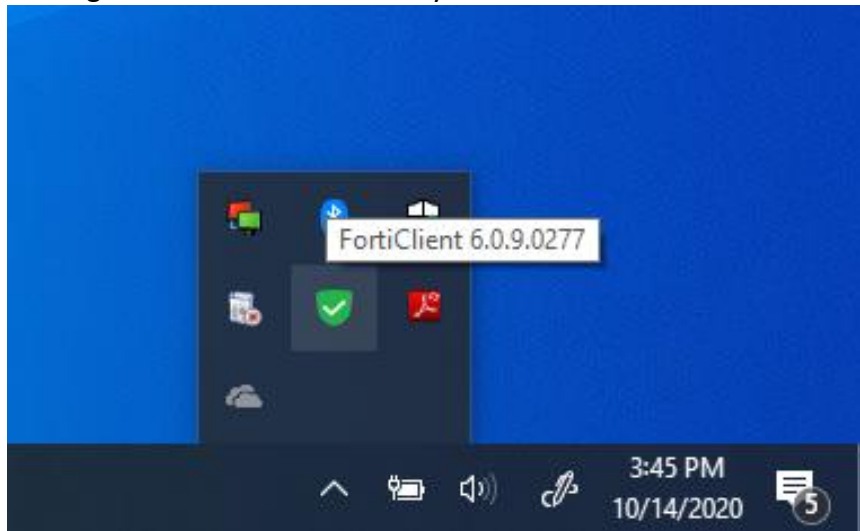


Students can check the connection in the System Tray by clicking on the up carrot “^” to see the FortiClient icon which is a green shield with a checkmark. (as shown below).

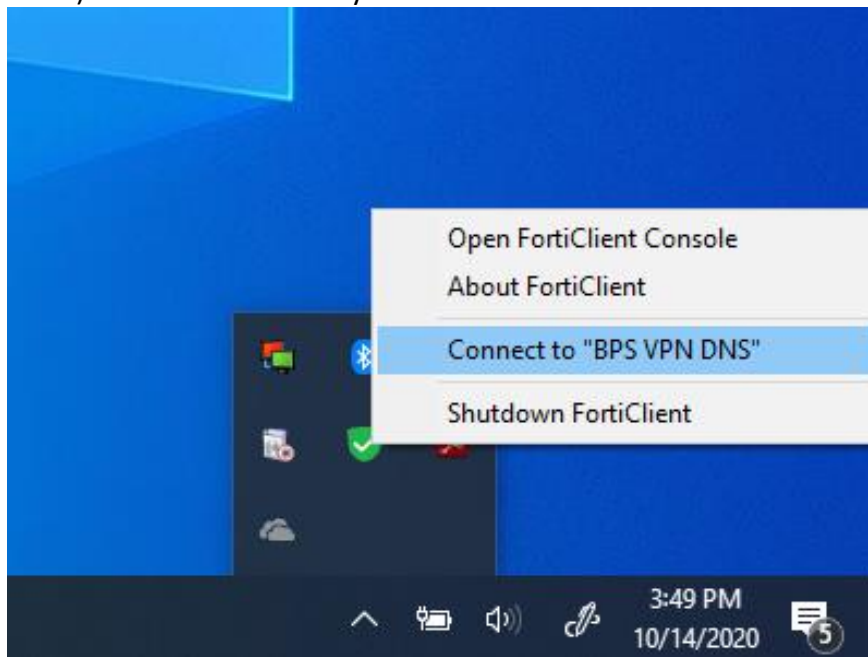


[Reconnecting to FortiClient](#)

You can see if you are disconnected from the VPN FortiClient by looking at you System Tray and looking at the FortiClient icon. If you do not see a lock next to the icon you are disconnected.



To reconnect the VPN FortiClient right click the FortiClient icon and select (Connect to "BPS VPN DNS"). This will reconnect you.



Once you are connected to the BPS VPN with FortiClient you will see a lock next the FortiClient icon in the System Tray.

